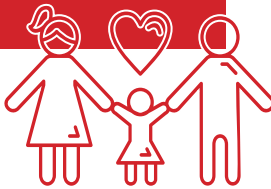


WHAT ARE EARLY CHILDHOOD SUPPORTS?

Children develop and learn rapidly in their first six years of life, so more benefit is gained by initiating play-based therapy in these early formative years. It is important to address any concerns as early as possible while their mind is most reactive. This will assist their development and help them become a successful learner.

At My Therapy House® we believe in the importance and benefits of supporting early childhood development for children who have a developmental delay or life-long disability.

We are a specialist team that can provide support through family-focused, child-centred therapy. Parents and caregivers are able to learn how to help their child in a homely, supportive learning environment where the child and their family can feel comfortable, in a playful and sensory motor environment.



We support children to develop meaning around their world, and to connect, interact and communicate with those around them through playful experiences, supporting their foundational development.

CONTACT US:



(08) 8277 7002



hello@mytherapyhouse.com.au



www.mytherapyhouse.com.au



MY THERAPY HOUSE
Opening doors in communication and relationships

EARLY CHILDHOOD SUPPORTS

Supporting children and their families to build their foundational developmental skills in physical, social and emotional wellbeing.

WE ARE:

- A family-friendly early developmental specialist team supporting children with developmental delays from 0-7 years of age and their families and carers through Early Childhood Supports.
- A service which offers practical and creative ideas, programs and environments that families can replicate and implement at home.
- A South Australian owned small private practice located in a family friendly environment at Mitchell Park.



MY THERAPY HOUSE
Opening doors in communication and relationships

WE WORK... WITH THE CHILD

The My Therapy House® Early Childhood Supports team provides a play-based program that enables experiences for each child at their individual level of development, and that is tailored to the needs of each child.

WHEN BUILDING THE PROGRAM WE CONSIDER THE CHILD'S:

- Unique needs
- Interests
- Learning styles
- Physical abilities
- Sensory processing preferences
- Body awareness
- Communication abilities
- Comprehension
- Developmental levels

THE FOLLOWING AREAS MAY BE ADDRESSED:

- Regulation
- Exploration of Ideas
- Connecting with Others
- Play
- Communication
- Gross Motor and Fine Motor

WE WORK... WITH THE FAMILY

We work with the family to build trusting relationships between the child and the parents/caregivers.

WE SUPPORT FAMILIES WITH:

Understanding their child's development and strategies to support them

Understanding how their child sees, connects and interacts with their world.



Understanding how their child connects and interacts with others.



Learning about how best to connect with and support their child's development.

WE WORK... WITHIN A TEAM

We are a dedicated specialist team who will work to support children to develop connections, interactions and to communicate with their significant others through a play based and sensory/ motor exploratory environment.

